

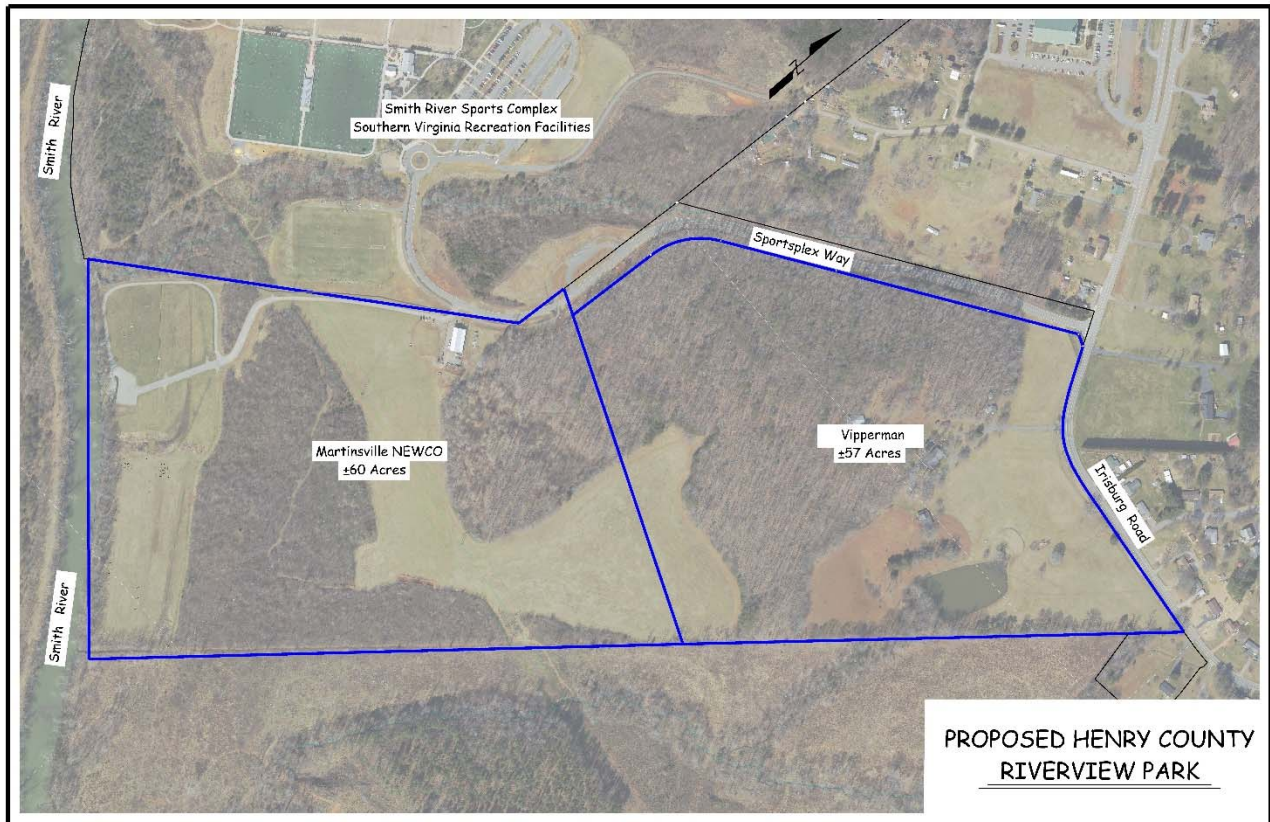
Henry County is applying for a National Park Service (NPS) Land & Water Conservation Fund (LWCF) grant, through the Virginia Department of Conservation and Recreation (DCR), to purchase approximately 117 acres of land located along the Smith River. Henry County is seeking public comment on the acquisition proposal.

Written comments for the record must be mailed or emailed to:

Henry County  
Engineering & Mapping  
Attn: Tim Pace, PE  
Director to Engineering  
P.O. Box 7  
Collinsville, Virginia 24078  
[tpace@co.henry.va.us](mailto:tpace@co.henry.va.us)

All written comments must be received by 5:00 p.m. on June 4, 2021. For more information, please contact Tim Pace at [tpace@co.henry.va.us](mailto:tpace@co.henry.va.us) or (276) 634-4776.

The combined 117-acre parcels are located on Irisburg Road and Sportsplex Way, adjacent to the Smith River Sports Complex. The project location is depicted on the aerial map below.



The land acquisition will enable the development of a new park, to be named Riverview Park, adjacent to the Smith River Sports Complex (SRSC). The acquisition includes two parcels, one of which will be purchased with LWCF funding (the Vipperman parcel) and reserved in perpetuity as land with the potential for increasing open space outdoor recreation opportunities in Henry County, in conjunction with a second parcel (the Martinsville NEWCO parcel) that is currently held by a local foundation and will be donated to the County. When considered together, the acquired parcels will significantly improve access to the Smith River and SRSC, preserve the riparian corridor along the Smith River shoreline, and increase open space reserved for future recreational opportunities.

Once completed, the proposed acquisition and transfer will ultimately expand public park amenities, owned and operated by Henry County, that are available to the public 365 days of the year. The existing golf driving range, pavilion, restroom, open space, and SRSC River Access point to the Smith River Blueway will remain and continue to be accessible to the public.

Future recreational amenities under consideration by the County for the combined parcels may include a primitive walking trail that links to Sportsplex Way and the 10.7-mile Dick & Willie (D&W) Passage Walking Trail, camping facilities, and public parking. Therefore, no ground disturbance is currently proposed. Wetland areas are present on-site, including the pond in the northeast portion of the Vipperman parcel, and the Smith River and small stream along the southwest boundary of the Martinsville NEWCO parcel. Preliminary conceptual planning creates the possibility for improvements to the park within the 100-year floodplain adjacent to the Smith River. However, any future amenities proposed within the wetlands and/or 100-year floodplain will be required to comply with all applicable federal, state, and local regulations. No environmental impacts from the proposed project are anticipated.